

 **BASF**

We create chemistry

Built for Performance

High performance flooring
for sports fields and playgrounds





High Performance Surfaces

Used on track surfaces and children playgrounds, BASF's polyurethane-based (PU) flooring structure provides high rebound and excellent impact absorption, helping athletes achieve their best performance while lowering risks of exercise-related injuries for children.



Made with Innovative Solutions

As a market and technology leader for PU solutions, our Elasthan® and Elastocoat® series of coatings and adhesives, along with a special grade of expanded thermoplastic polyurethane (E-TPU), Infinergy® SP, are applied to a variety of permeable and non-permeable surfaces from athletics stadiums to school fields and playgrounds.





Benefits of Surfaces

Versatile and highly resilient

- Easily applied with adjustment of thickness of structure
- Applicable in both permeable and impermeable structures with customizable colours
- Low project and maintenance cost due to fast curing after construction
- Infinergy® SP achieves good rebound and force reduction

Strong and durable

- Resistant to diverse weather conditions, oil and water
- Excellent bonding strength with E-TPU

Eco-friendly

- Fully based on methylene diphenyl diisocyanate (MDI) which does not require any solvent, chlorinated paraffin, heavy metal catalyst, or MOCA

Product Range

Sports Surfaces: Running Tracks and Walkways



Full PU Impermeable (ETPU)

SURFACE
Elastocoat CC8084/1 (Red) or
Elastocoat CC8085 (Green)
& EPDM (Sprayed)

*Broadcast surface layer is also available with Elastocoat CC6120 + EPDM

UNDERLAYER
Elastocoat CC6120 (Elastomer) + ETPU




Sandwich Impermeable

SURFACE
Elastocoat CC8084/1 (Red) or
Elastocoat CC8085 (Green)
& EPDM (Sprayed)

*Broadcast surface layer is also available with Elastocoat CC6120 + EPDM

PORE SEALER LAYER
Elastocoat 6120 plus EPDM
powder or thickening agent

UNDERLAYER
Binder made with Elastan
CC8004 C-B series
+ EPDM/SBR/ETPU



Spraycoat Water-permeable

SURFACE
Elastocoat CC8084/1 (Red) or
Elastocoat CC8085 (Green)
& EPDM (Sprayed)

UNDERLAYER
Binder made with Elastan
CC8004 C-B series
+ EPDM/SBR/ETPU

Product Range

Sports Surfaces: Exercise Courts

Playground Surfaces



SURFACE
Elastan CC8004
+ EPDM (Hand lay-up)

UNDERLAYER
Binder made with
Elastan CC8004
and ETPU



Zhangjiajie Miaopu Hope Primary School



Badminton Court



Tennis Court



Basketball Court, Changsha, Hunan, China

SOLUTIONS

Elastocoat CC6452C-A & ISO 116/1(unfilled)

Elastocoat CC6452/100 (filled)



Product Range

Other Surfaces: Artificial & Rubber Turf



Artificial Turf

Elastan CC6505C-B

- Low volatile organic compounds (VOCs)
- Strong viscosity
- Good weather resistance
- Adjustable curing time

Adhesive for artificial turf seam

As a market and technology leader for polyurethane (PU) solutions, our Elastan® and Elastocoat® series of PU coatings and adhesives, along with a special grade of expanded thermoplastic polyurethane (E-TPU), Infinergy® SP, are applied to a variety of permeable and non-permeable surfaces from athletics stadiums to school fields and playgrounds.



Turf Back Coating

Elasturan CC 6601
C-A / KH1250 CB



Rubber Textile

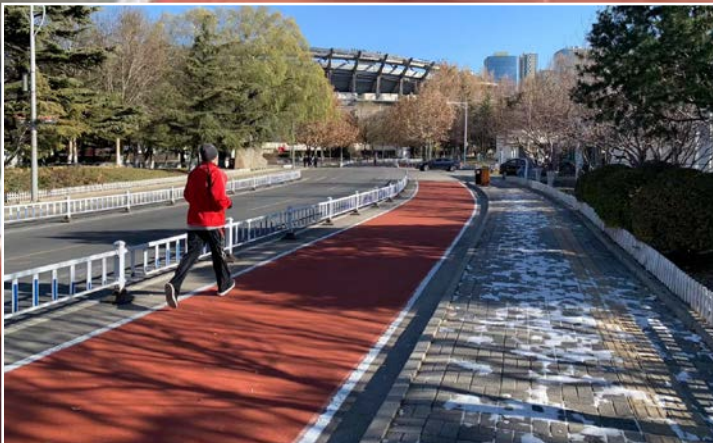
Binder Elastan
CC6565/2C-B



Reference Projects



Fitness trail at National Olympic Sports Center



Year: 2019

Location: Beijing, China

Construction size: 2.5 kilometers

Project: Serving over 2 million visitors annually, the fitness trail paved with BASF's solutions can withstand Beijing's harsh winter condition of -10 degrees. The trail provides sports enthusiasts with maximum impact absorption, protecting their knee joints and ensuring a safer exercise environment.



全民健身步道



Reference Projects

Protective Flooring at Yuecheng Courtyard Kindergarten



Year: 2019
Location: Beijing, China
Construction size: 4,900m²

Project: Acknowledged by the industry as one of 2019's "Most Anticipated buildings in China", the sports field and pavement of the over 300-year-old kindergarten was paved with 15mm thick DPU sports protection flooring. The school children in YueCheng's primary school are now able to enjoy their exercises and playtime on safer and more comfortable flooring.

Fitness Trail at Changxing Island Country Park



Year: 2016
Location: Shanghai, China
Construction size: 10 kilometers

Project: Constructed by BASF and DuBaiCheng Environmental Protection Engineering Co., Ltd (DBC), the fitness trail is one of the key highlights in the park located at Changxing island, Shanghai.

In addition to connecting all the scenic spots in the park, the beautiful trail also provides an excellent venue for exercising and large-scale sports events.



Reference Projects

Running Track at Wuyuanhe Cultural and Sports Stadium



Year: 2019

Location: Hainan, China

Construction size:

- Main track: 12,640m²
- Sub track: 11,875m²

Project: The 60,000 square meters stadium can host up to 50,000 spectators for international and national competitions, in addition to various cultural activities. The runways for the main field and sub-field constructed with 13 mm thick Infinergy solutions, providing high rebound and improved performance for all athletes.

Integrated Exercise Facilities at Yunnan Primary School



Year: 2019

Location: Ning'er Hani and Yi Autonomous County

Construction size: Close to 8,000 square meters

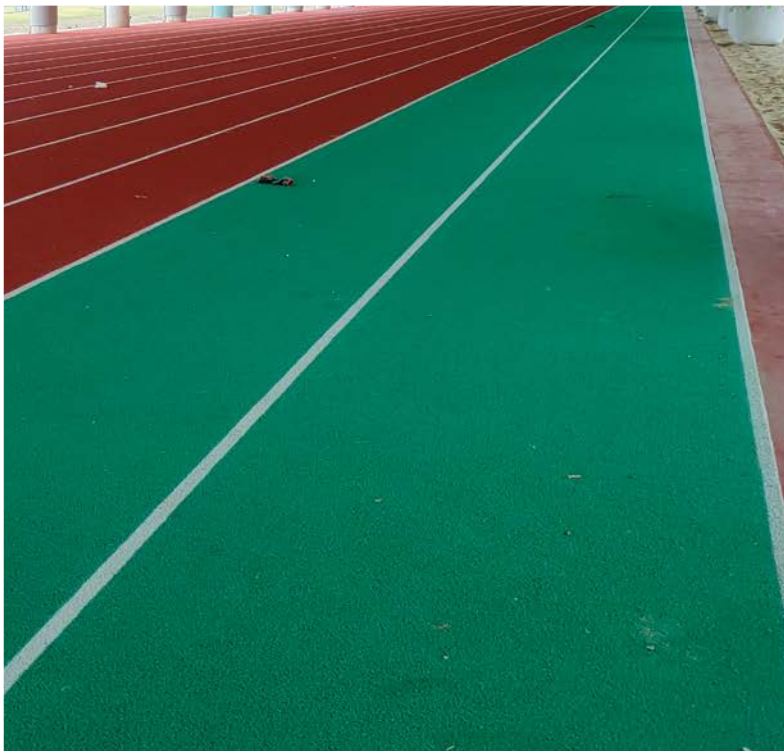
Project: Located in Yunnan province the exercise areas in the 112 year-old primary school were worn down, making it dangerous for students to play in. BASF together with our partner DuBaiCheng Environmental Protection Engineering Co., Ltd (DBC) constructed new play areas paved with DPU flooring for the children.

They comprise of a 2,000 square meters circular running track, a 1,500 square meters sports track, in addition to 4,000 square meters of badminton, basketball and netball courts.



Reference Projects

Soft running track at National Sports Training Center



Year: 2019
Location: Kaohsiung City, Taiwan
Construction size: 800 m²

Project: Developed specifically to help Olympic athletes achieve improved performance and endurance, the soft running track is softer than IAAF standards and has a thickness of 40 mm (36 mm ETPU + 4 mm EPDM).

Playground at Binh Minh School for Special needs



Year: 2019
Location: Hanoi, Vietnam

Project: The playground supports over 70 students with disabilities, providing them with outdoor toys and play areas to help children recover from illness and develop physical and cognitive skills.

Properties of Infinergy® SP

As elastic as rubber but lighter

When used in sports surfaces and playgrounds, Infinergy® is a low-maintenance, high-performance surface. It is durable across a wide temperature range and chemical-resistant, offering the best rebound among particle foams.

The closed-cell, elastic particle foam combines the properties of TPU with the advantages of foams.

Key features

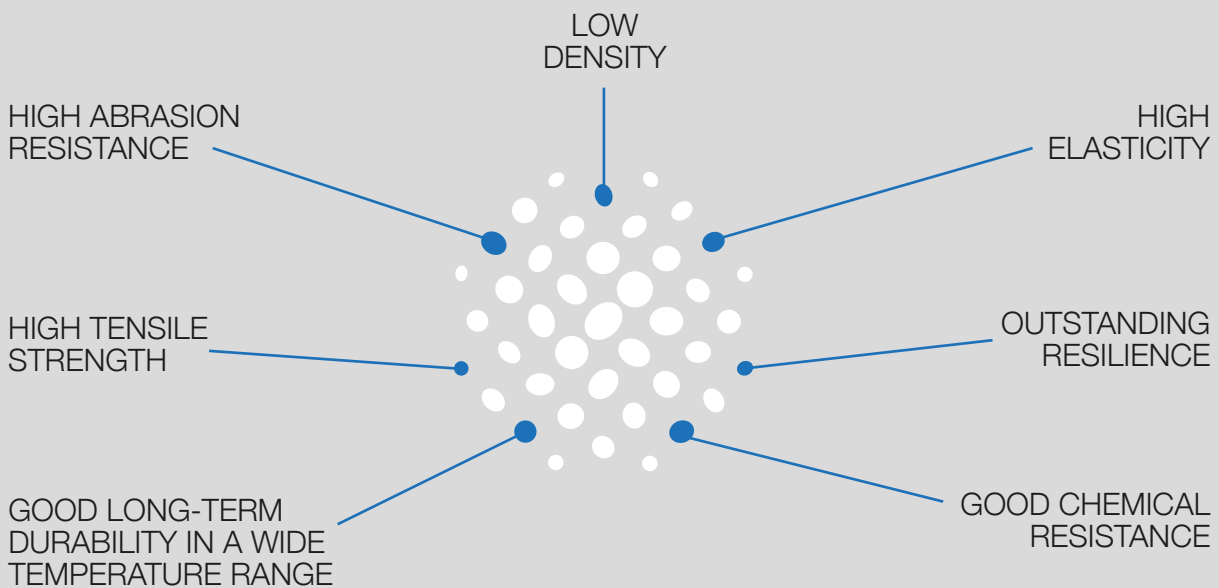
MATERIAL EXPERTISE
Elastollan® (TPU)



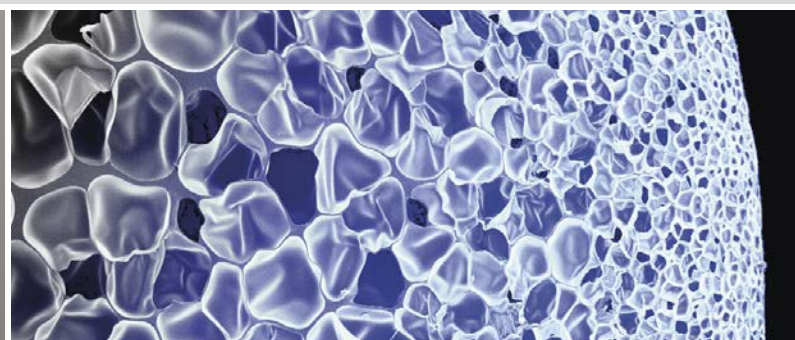
PARTICLE FOAMS KNOW-HOW
Neopolen®



INNOVATION
Infinergy® (E-TPU)



The individual Infinergy® SP beads are sized from 5 to 10 mm and supplied with a bulk density of approximately 110 kg/m³.



The closed cells inside an Infinergy® SP bead as seen on a scan, taken with a scanning electron microscope.



We create chemistry



Scan the QR code to learn more about our high performance flooring solution.

BASF Performance Materials Asia Pacific

7 Temasek Boulevard
#35-01 Suntec City, Tower one,
Singapore 038987
Tel: +65 6398 5000
Fax: +65 6337 0330

BASF Taiwan Ltd.

16F, No.87, SungJiang Road,
104 Taipei, Taiwan
Tel: 886-2-2518 7600
Fax: 886-2-2518 7702

BASF Company Ltd

14-16F, KCCI Bldg, 39,
Sejongdaero, Jung-gu,
Seoul, Korea, 04513
Tel: +82-2 3707 3100
Fax: +82-2 3707 3122

BASF (China) Co. Ltd.

333 Jiangxinsha Road, Pudong
Shanghai 200137
Tel: 86-21-2039 1000
Fax: 86-21-2039 4306

BASF India Ltd.

Plot No. 12, TTC Area,
Thane Belapur Road, Turbhe,
Navi Mumbai, 400 705 India
Tel: +91-22 6712 7665
Fax: +91-22 6712 7628

BASF (Malaysia) Sdn Bhd

Lot 19.02, Level 19, 1 Powerhouse
No. 1. Persiaran Bandar Utama
Bandar Utama, 47800 Petaling Jaya
Selangor Darul Eshsan
Tel: +603 7456 1888
Fax: +603 7456 1777